



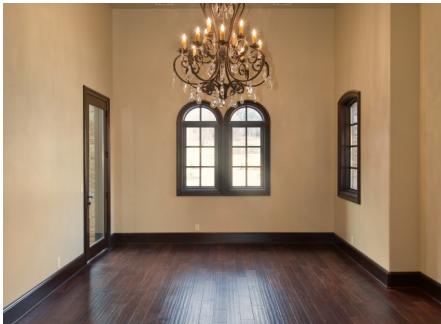
8124 BIG VIEW

Austin

Spectacular new construction, built by Ed Hamel Homes, with 110 feet of Lake Austin waterfrontage. This 7600 square foot estate offers a wealth of luxurious details such as hand-troweled walls, exquisite woodwork, stone and granite surfaces, hardwood floors, groin-vaulted ceilings, gourmet kitchen with commercial-grade appliances and an elevator. Outside features include an outdoor kitchen, wet bar, pool, 1500 square-foot covered veranda and patio, and a 2-story boat dock with 2 slips. Unparalleled in quality and elegance, this home is a must see!

\$3,495,000

http://turnquistpartners.com/properties/details/137930-8124_big_view_austin_tx_78730



Property ID #:	0	Area	Austin
Type:		Fees:	\$250 / Annual
Living Area:	3	Taxes:	5770
Lot Size:	1.08	County:	Travis
Bedrooms:	5	School District:	Leander Isd
Full Baths:	5	Floors:	2
Partial Baths:	2	Year Built:	2008
Garage Capacity:	4 car		



For more information on the property, please contact

Kathryn Scarborough Bechtol

512-328-3939 | 1.800.282.3939

or send an e-mail to kathryn@turnquistpartners.com

Westlake Office 3700 Bee Caves Rd. Suite 102 Austin, TX 78746