



1600 BARTON SPRINGS #6409

Austin

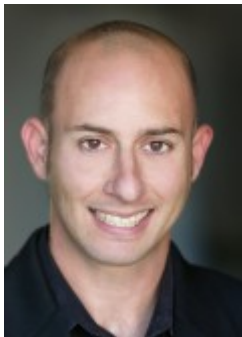
Live where Austin plays! BartonPlace is a new condominium community at the center of all that's uniquely Austin. It's more than an address, it's a connection to the spirit of the Capital city. It is located walking distance to Zilker Park and Lady Bird Lake. The upscale finish out boasts High-end European kitchen appliances, European style cabinetry, Stone counter tops, Designer goose neck spring faucet, Wood Flooring and that's just the kitchen!! Move in starts as early as february 2010.

\$504,900

http://turnquistpartners.com/properties/details/195123-1600_barton_springs_6409_austin_tx_78704



Property ID #:	5381933	Area	Austin, South
Type:		Fees:	424 monthly
Living Area:	1	Taxes:	
Lot Size:		County:	Travis
Bedrooms:	2	School District:	Austin Isd
Full Baths:	2	Floors:	
Partial Baths:	0	Year Built:	2009
Garage Capacity:			



For more information on the property, please contact

Ben Phillips

512-965-9236 | 1.800.282.3939
or send an e-mail to ben@turnquistpartners.com

Westlake Office 3700 Bee Caves Rd. Suite 102 Austin, TX 78746