



## **727 OVERLOOK MOUNTAIN**

**Buda**

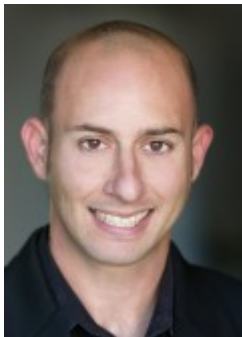
This Drees custom built home sits on a very usable 2.47 acre serene lot with more oak trees than you can count. The home itself offers a large kitchen with Granite counters, master down with jetted tub and walk in closets, a huge game room as well as a downstairs office, media/entertainment room and 3 car garage. There are also 4 full baths which provides the flexibility needed for large families and house guests. SEE ATTACHMENT FOR GATE CODE.

**\$478,000**

[http://turnquistpartners.com/properties/details/202532-727\\_overlook\\_mountain\\_buda\\_tx\\_78610](http://turnquistpartners.com/properties/details/202532-727_overlook_mountain_buda_tx_78610)



Property ID #:	4611798	Area	Buda/Kyle
Type:	House	Fees:	400
Living Area:	4,143	Taxes:	8930.47
Lot Size:	2.48	County:	Hays
Bedrooms:	4	School District:	
Full Baths:	4	Floors:	2
Partial Baths:	0	Year Built:	2001
Garage Capacity:	3		



For more information on the property, please contact

**Ben Phillips**

512-965-9236 | 1.800.282.3939

or send an e-mail to [ben@turnquistpartners.com](mailto:ben@turnquistpartners.com)

**Westlake Office** 3700 Bee Caves Rd. Suite 102 Austin, TX 78746